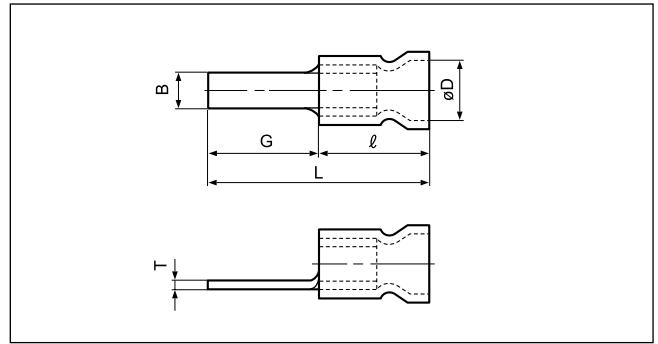
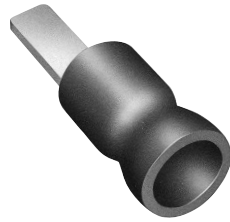






Solderless terminals

**BLADE** Vinyl-insulated (funnel-entry)



Certificate No.:  E42024

Applicable Wire AWG# (mm <sup>2</sup> )	Part No.	Standard	Dimensions mm (in.)						Color	Tool No.						Qty/box	
			B	L	G	ℓ	øD	T		YNT-2216	YNT-1614	YNT-1210S	YA-1	YA-2	YA-4		BCT-0514L
22 to 16 (0.25 to 1.65)	FVX1.25-AF2.3B		2.3 (.091)	21.0 (.827)	10.0 (.394)	10.8 (.425)	4.0 (.157)	0.8 (.031)	Red	o		o	o	o	o	o	1,000
	FVX1.25-AF3A-S		3.0 (.118)	23.3 (.917)	12.5 (.492)												
	FVX1.25-BL		3.0 (.118)	21.9 (.862)	11.1 (.437)												
16 to 14 (1.04 to 2.63)	FVX2-AFW		4.6 (.181)	29.0(1.142)	18.2 (.717)	10.8 (.425)	4.6 (.181)	0.8 (.031)	Blue	o		o	o	o	o	o	1,000
	FVX2-AF3A-S		3.0 (.118)	23.3 (.917)	12.5 (.492)												
12 to 10 (2.63 to 6.64)	FVX5.5-AF4A-S		4.0 (.157)	28.0(1.102)	14.0 (.551)	14.0 (.551)	6.8 (.268)	1.0 (.039)	Yellow			o			o	o	500

- Note: 1) Terminals with part number suffix "-S" have serrations on the blade.  
 2) The part numbers indicated in the above table are for products with a brazed seam.  
 When ordering products with a butted seam, add the prefix "WS" to the part number (ex. FVX1.25-AF3A-S → **FVXWS1.25-AF3A-S**).  
 3) \*The crimping will be more secure if the total cross-sectional area of the wire is at least 0.5 mm<sup>2</sup>.  
 Examples: If the cross-sectional area of the wire is 0.3 mm<sup>2</sup>, fold the wire in two when crimping the terminal.  
 If the cross-sectional area of the wire is 0.5 mm<sup>2</sup>, crimp the terminal onto the wire as it is.  
 4) Delivery lead times may vary depending on the product. Contact JST for details.